

DATASHEET

FFA-3600 • FFA-6000 • FFA-8000

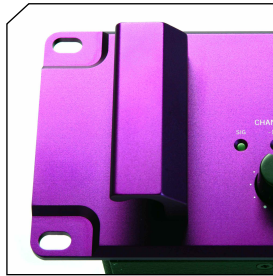
Producing up to 4000W per channel and with ability to really drive 2 Ohm impedance loads without sacrificing sound quality, Full Fat Audio amplifiers deliver awesome performance in lightweight standard 2RU packages. Three amplifier models are available using high efficiency cool operation Class D amplifier topology.

All feature aluminium construction with custom designed heatsinking giving strength and rigidity to the amplifiers chassis. Tough Dupont® paint finish protects the case exterior. Bead blasted anodised, custom extruded, milled front panel and handles. Our amplifiers are designed to perform in the harshest environments that the professional audio industry presents to audio equipment

The FFA-6000 and FFA-8000 amplifiers feature dual switch mode power supplies. Each amplifier is a mono block system which is independent of its 'partner' channel.

All FFA amplifiers are ideally suited to drive ' 2 Ohm' loads in the most demanding applications thus giving best amplifier to loudspeaker ratio. The FFA-8000 offers ultimate low frequency amplification for specialist high power sub bass systems.

Designed and manufactured in England.



FEATURES AT A GLANCE

- Weight 12kg
- Dual power supply
- Built-in clip limiter
- Innovative cooling system
- 100% aluminium casing
- Aluminium extruded front panel
- High current Neutrik SPEAKON® NL4MP-UC connectors
- 2 Ohm drive
- Power supply soft start
- 4 year warranty



SPECIFICATIONS

FFA-3600 • FFA-6000 • FFA-8000

Power Ratings	Measured per channel, driven at 1 kHz, 240 VAC supply voltage to no more than 1% THD FFA-3600 – 8 Ohms 650W, 4 Ohms 1200W, 2 Ohms 1900W rms FFA-6000 – 8 Ohms 1000W, 4 Ohms 1800W, 2 Ohms 3000W rms FFA-8000 – 8 Ohms 1250W, 4 Ohms 2400W, 2 Ohms 4000W rms
Gain	36dB
THD	Typical 0.05% 4 Ohm 1kHz THD+N
Frequency Response	20 Hz - 20 kHz
Controls	FFA-3600 single power on switch. FFA-6000/FFA-8000 power on switch each channel. Channel A+B 40 point Potentiometers.
Indicators	Indicators Power on - green LED, Signal present green LED, signal -10dB drive yellow LED, onset of amplifier clip red LED. Amplifier protect due to over temp, clip limiter activated, 3 second mute on power up or fault red LED.
Cooling	Variable speed high CFM fan, rear to front air flow.
Load Protection	DC on output, clip limiter.
Amplifier Protection	Short circuit, current overload, thermal, reactive load stability
Inputs	Professional Neutrik XLR with link provided for signal 'daisy chaining'.
Outputs	2 high current Neutrik NL4MP-UC SPEAKON® connectors per channel. All poles live 1+, 1-, 2+, 2-.
Power Supply	FFA-3600 single input IEC high current switch mode. FFA-6000/FFA-8000 dual input IEC dual high current switch mode power supply.
Power Requirements	220 - 240 VAC 50 - 60Hz, 1 x 10A circuit FFA3600, FFA6000, FFA8000 2 x 10A circuits.
Power Operational Range	185V - 240 VAC
Dimensions	2RU 19" rack mount enclosure, H88mm x W483mm x D510mm. Depth includes integral rear rack support ears.
Weight	FFA-3600 – 10kg, FFA-6000/FFA-8000 – 12kg.

Trades descriptions act. FFA has a policy of continued product improvement and accordingly reserve the right to change features and specifications without notice.



DEALERS STAMP

tel: +44 (0) 1707 270392 fax: +44 (0) 1707 270392 email: info@fullfataudio.com

WWW.FULLFATAUDIO.COM